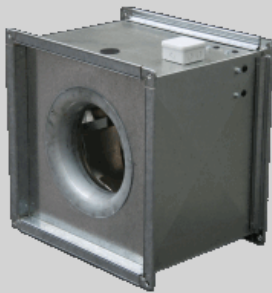


Quartz Series: Square Inline Centrifugal
Model: QUS056-601



Common Applications

Suitable for duct mounting in any position, the Quartz Series inline centrifugal fans can be used for various general ventilation applications including carpark and kitchen exhaust, supply and return air where medium to high pressure is required.

Electrical

Available in 240V single-phase and 415V three-phase. Motors are speed controllable.

Materials

High efficiency backward curved aluminium impeller with external rotor motor. All three-phase units incorporate 2-speed Star/Delta motors. Galvanised steel fan casing with flanged end connections.

Protection

IP54 external rotor motor with integral thermal protection.

Warning

Warranty may be void if wiring and installation guidelines are not followed.

Refer to wiring diagram WD1-01 available at www.aerovent.com.au/downloads
Performance Standard BSA BS 848

Aerovent Australia Pty. Ltd.

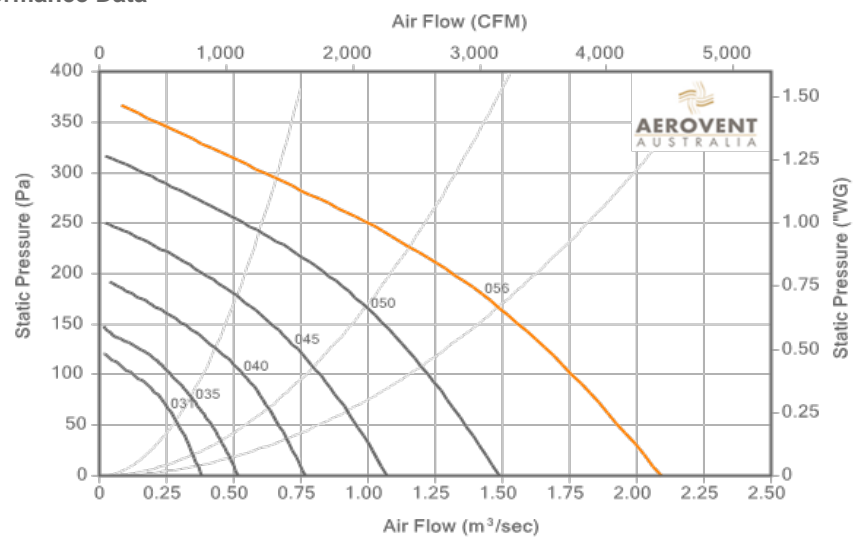
Head Office - Victoria

31 Hosie Street
Bayswater, Victoria 3153
Phone: +61 (0)3 9720 8088
Fax: +61 (0)3 9720 7133
Email: sales@aerovent.com.au

Project:

Fan Ref:

Performance Data



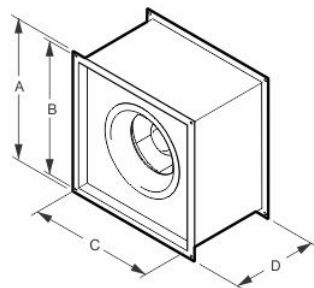
Model Specifications

Power, kW	Current, Amps	Speed, RPM	Power Supply	dB(A) @ 3m	Mass, kg
0.66	3	860	240V / 1Ph / 50Hz	47	53

Sound Power Level (dB re10-12 W) at Octave Band Mid-Frequency (Hz)

63	125	250	500	1k	2k	4k	8k
76	72	71	63	58	56	59	62

Dimensions, mm



A	B	C
783	754	723
D	E	F
800	-	-
G	H	I
-	-	-

Due to Aerovent Australia's constant product improvement and development program, product details may change without prior notice. Copyright © 2019 Aerovent Australia. All rights reserved.